

The Volkan 401



Designed for applications across the agricultural sector, the Volkan 401 enables users to take control of their waste management by providing efficient and bio-secure on-site incineration of Animal-By-Product waste. Boasting an impressive main chamber, the 401's top-loading, counterbalance lid provides complete exposure to the chamber, enabling users to easily load animal carcasses such as sheep and small pigs. Full exposure to the main chamber also enables users to load the machine via tipping skips and tractor buckets. The Volkan 401 is ideal for those looking for a quick, effective and bio-secure Animal-By-Product incineration solution.

As with all models in the Volkan Range, the Volkan 401 is supplied with an integral secondary chamber, ensuring it fully conforms to EU By-Products Regulation (ABPR) (EC) No 142/2011, DEFRA Regulations and many other legislative bodies around the world.

Key Features:

- Monolithic Lining
- Top loading counterbalance lid, providing full access to the large main chamber
- Low thermal mass linings for minimal heat loss
- PLC timer controls with automatic burner shut off function and rapid ignition pulse fired burners for low running costs
- Burns up to 50kgs/111 lbs an hour
- Can be loaded whilst in operation, maximising throughput whilst utilising the inherent thermal efficiency of our monolithic lining

Ideally Suited For:

- Poultry
- Sheep – Lambs or Ewes
- Goats
- Pig Operations / Finishing Farms
- Game Farms
- Estates
- Farm shops
- Butchers

Optional Features:

- Ash Door
- Metal Hearth
- Stack Extension
- Ash Rake
- USB Data Logger
- Heat Exchanger



The Volkan 401 Specifications



Specifications	Unit - Metric		Unit - Imperial	
Burn Rate	Up to kg/hr	50	Up to lbs/hr	111
Front / Top Load		Top		Top
Static Operational Dimensions (LxWxH)	m *inc Standard Stack	2.8 x 1.9 x 3.5	feet/inch *inc Standard Stack	9'3" x 6'2" x 11'7"
External Height - Static	mm *inc. Stack	3520	feet/inch *inc. Stack	11'7"
External Height - Static	mm *ex. Stack	2530	feet/inch *ex. Stack	8'4"
Weight	Tonne *estimated	2.3	lbs *estimated	5071
Concrete Pad Size (L x W)	m	4.8 x 3.9	feet/inch	15'10" x 12'8"
Fuel Consumption Diesel	LPH *est during main burn	6 - 9	GPH *est during main burn	1.6 - 2.3
Fuel Consumption LPG	LPH *est during main burn	8 - 13	GPH *est during main burn	1.5 - 3.5
Fuel Consumption Nat Gas	m ³ /h *est during main burn	6 - 9	ft ³ /h *est during main burn	220 - 311
Metal Hearth		Optional		Optional
Load Door Opening (Width x Height x Depth)	mm *area	1158 x 788	ft/inch *area	3'10" x 2'7"
Chamber Size (LxWxH)	m	1.4 x 0.8 x 0.7	ft/inch	4'7" x 2'6" x 2'3"
Chamber Actual Volume	m ³	0.71	ft ³	25
Chamber Load Volume	m ³	0.42	ft ³	15
Chamber Load Capacity	kg	240	lbs	529
Std Stack Diameter	inch/mm *2D size	10"	inch *2D size	10"
No. Main Burners		1		1
No. Secondary Burners		1		1
Burner Output	kW *heat	147	Btu *heat	501,585
Electric Consumption	kW *electric	0.25	kW *electric	0.25

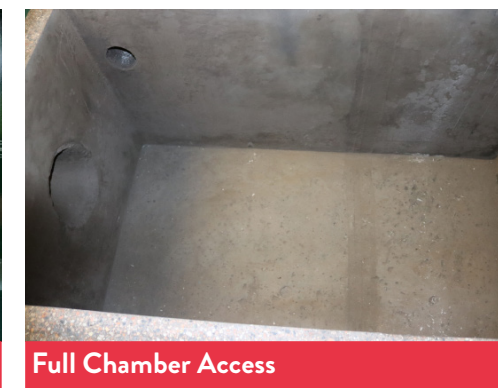
The Waste Spectrum Way:

Here at Waste Spectrum, we do things a little differently.

- Each machine is hand crafted by our team of industry experts at our workshop in the Heart of England.
- Integral to our machines quality is the monolithic casting system, a technology that is unique to the Waste Spectrum brand. The monolithic casting system ensures maximum strength and reliability as the materials can expand and contract at the same rate, unlike brick lined machines. The insulation board reduces heat loss and the stainless anchor system maintains the integrity of the lining.
- The Waste Spectrum monolithic casting system ensures the longevity and reliability of our machines, as they can achieve high temperatures without posing risk to the machines structural integrity.
- Behind the Waste Spectrum brand is a team of experts who are always on hand to discuss any queries or questions that you may have about incineration.



Optional: Ash Door View



Full Chamber Access