

The Volkan 300 PC



The Volkan 300 PC is a purpose-built front-loading pet cremation incinerator, designed for individual domestic pet carcass incineration. As standard the Volkan 300 PC utilises a concrete specifically graded for the Pet Cremation industry, making it ideal for Pet Crematoria and Veterinary Hospitals as clinical waste can be incinerated in addition to individual pet carcasses.

As with all models in the Volkan Range, the Volkan 300 PC is supplied with an integral secondary chamber, ensuring it fully conforms to EU By-Products Regulation (ABPR) (EC) No 142/2011, DEFRA Regulations and many other legislative bodies around the world.

Key Features:

- The Volkan 300 PC's monolithic lining uses concrete specifically graded for the Pet Cremation industry
- Front loading design provides easy access and is ideally suited for individual pet carcasses
- Low thermal mass linings for minimal heat loss
- PLC timer controls with automatic burner shut off function and rapid ignition pulse fired burners for low running costs
- Burns up to 50kgs/111 lbs an hour
- Can be loaded whilst in operation, maximising the inherent thermal efficiency of our monolithic lining

Ideally Suited For:

- Pet Carcasses – Small to Medium Pet Carcasses
- Veterinary Clinics
- Vet Colleges
- Humane Societies

Optional Features:

- Ash Rake
- Stack Extensions
- Pet Tray
- USB Data Logger
- Cremulator
- Loading Trolley
- Loading Winch
- Heat Exchanger
- Sight Glass
- Fat Collection Tray



The Volkan 300 PC Specifications

Specifications	Unit - Metric		Unit - Imperial	
Burn Rate	Up to kg/hr	50	Up to lbs/hr	111
Front / Top Load		Front		Front
Static Operational Dimensions (LxWxH)	m *inc Standard Stack	1.9 x 1.6 x 5.6	feet/inch *inc Standard Stack	6'2" x 5'4" x 18'3"
External Height - Static	mm *inc. Stack	5563	feet/inch *inc. Stack	18'3"
External Height - Static	mm *ex. Stack	2496	feet/inch *ex. Stack	8'2"
Weight	Tonne *estimated	2.3	lbs *estimated	5071
Concrete Pad Size (L x W)	m *recommended	3.9 x 3.6	feet/inch *recommended	12'9" x 11'11"
Fuel Consumption Diesel	LPH *est during main burn	6 - 9	GPH *est during main burn	1.6 - 2.3
Fuel Consumption LPG	LPH *est during main burn	8 - 13	GPH *est during main burn	1.5 - 3.5
Fuel Consumption Nat Gas	m ³ /h *est during main burn	6 - 9	ft ³ /h *est during main burn	220 - 311
Metal Hearth		No		No
Load Door Opening (Width x Height/Depth)	mm *area	894 x 706	ft/inch *area	2'11" x 2'4"
Chamber Size (LxWxH)	m	1.2 x 0.9 x 0.7	ft/inch	3'10" x 2'11" x 2'4"
Chamber Actual Volume	m ³	0.73	ft ³	26
Chamber Load Volume	m ³	0.31	ft ³	11
Chamber Load Capacity	kg	180	lbs	397
Std Stack Diameter	inch/mm *2D size	10"	inch *2D size	10"
No. Main Burners		1		1
No. Secondary Burners		1		1
Burner Output	kW *heat	147	Btu *heat	501, 585
Electric Consumption	kW *electric	0.25	kW *electric	0.25

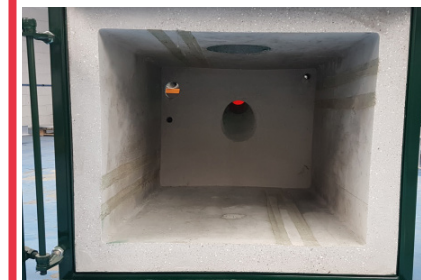
The Waste Spectrum Way:

Here at Waste Spectrum, we do things a little differently.

- Each machine is hand crafted by our team of industry experts at our workshop in the Heart of England.
- Integral to our machines quality is the monolithic casting system, a technology that is unique to the Waste Spectrum brand. The monolithic casting system ensures maximum strength and reliability as the materials can expand and contract at the same rate, unlike brick lined machines. The insulation board reduces heat loss and the stainless anchor system maintains the integrity of the lining.
- The Waste Spectrum monolithic casting system ensures the longevity and reliability of our machines, as they can achieve high temperatures without posing risk to the machines structural integrity.
- Behind the Waste Spectrum brand is a team of experts who are always on hand to discuss any queries or questions that you may have about incineration.



Optional: Cremulator



Internal Chamber View