

# HURIKAN 1000 G



HURIKAN 1000 Mobile Incinerator

The Hurikan 1000 G is a DEFRA 'Type Approved' extra-large top loading incinerator ideal for managing the disposal of general waste generated by businesses and households. All models in the Hurikan Range are supplied with integral secondary chambers and fully conform to EU By-Products Regulation (ABPR) (EC) No 142/2011.

Designed, engineered and manufactured at our Worcester production facility in the UK the Hurikan 1000 G is built using our market leading unique hearth bar technology. With an impressively large main incineration chamber, the Hurikan 1000 G has above and below hearth burners and can hold a significant amount of general waste in one load.

The Hurikan 1000 G has a proven capability of managing high capacity throughputs of all organic or inorganic waste streams except stone, steel or glass. Due to the nature of the waste streams and dependent upon local legislation, it may be necessary to include additional emissions control as this falls under IED (formally known as WID) regulations, if this is required then Waste Spectrum can provide you with further information plus energy recovery options, if required. The Hurikan 1000 G mobile system is the best-selling model in our Hurikan range and is used by governments worldwide.

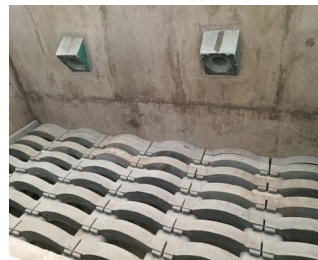
## Ideally Suited For:

- Hotel waste
- Remote camp waste
- Domestic waste
- Manufacturing waste
- Community waste
- Municipal waste (MSW)
- Mining waste

## Machine Construction

Integral to each model in the Hurikan range is the unique Waste Spectrum monolithic casting system:

- Ensures maximum strength in comparison to brick linings
- Materials expand and contract at the same rate as opposed to bricks and mortar
- Prevents animal fats penetrating the lining which prolongs life of the incinerator
- Insulating board is used to reduce heat loss
- Maintains an even temperature for the refractory
- Our stainless steel anchor system maintains the integrity of the lining



The unique hearth bar technology allows for efficient incineration from above and below.



Ash doors, as standard, allows fast and efficient ash removal whilst in operation.



A fully transportable mobile system ideal for remote locations with integral fuel tank, on board generator and, secure storage. The Hurikan 1000 is also fully skid mountable.

For more information contact:

+44 (0)1905 362 100

[www.wastespectrum.com](http://www.wastespectrum.com)

Follow us on:



## SPECIFICATIONS

Burn rate	UP TO 1000KG/hr*
Front or top loading	TOP
Overall size (L x W x H)	12.2 x 2.8 x 5.5
Fuel consumption	
Diesel	47 - 66 litres per hours
LPG	69 - 99 litres per hour
Fire bars	Yes
External height (excluding standard stack)	2774 mm
External height (including standard stack)	5475 mm
Standard stack diameter (2D Size)	526 mm
Door opening (L x W)	3905 x 1880 mm
Load height	1730 mm
Chamber size (L x W x H)	3.9 x 1.9 x (1.5 - 2.2) m
Chamber volume	10.92 m <sup>3</sup>
Chamber load volume	6.50 m <sup>3</sup>
Chamber load capacity	3580
Chamber capacity	6010
Total weight	21 Tonne
Concrete pad size (L x W)	14.5 x 6.0
Electrical supply requirements	Single phase 16A 230VAC 50/60Hz
Burner output (KW)	1106
Electric consumption (KW/hr)	2.25

\*Higher burn rate requirements may be achieved through our custom-built service.

## Features

- Easy operation, full training provided.
- Mechanical or manual loading possible.
- Fully automated and remote-controlled top-loading door: open/close/clamp operation.
- Market leading unique hearth bar technology allows fast and complete incineration.
- Pulse fired burners, above and below hearth maximises throughput. 5 burners in main chamber; 2 above & 3 below hearth.
- High Capacity up to 1000kg/hr\* burn rate enables fast disposal of waste.
- In the event of disease outbreak the incinerator can be operated and waste loaded within 2 hours of arrival on site providing swift containment.
- Ash doors, as standard, allows fast and efficient ash removal whilst in operation removing downtime.
- Temperature controlled pulse fired burners for optimal efficiency.
- Low thermal mass linings for minimal heat loss.
- Fully programmable touch HMI control panel with automatic burner shut off function and rapid ignition pulse fired burners for low running costs.
- Remote monitoring of the control system, enabling Waste Spectrum to support and monitor the incinerator during operation.
- Multiple channel thermocouple data logger built in to PLC.
- Can be loaded whilst in operation maximising the inherent thermal efficiency of our monolithic lining.
- A stainless steel, single skin exhaust stack is supplied as standard.
- Available as a static or mobile system.
- Mobile system is supplied with fuel tank, generator safety platform ladder, storage facility and ash rake.
- Electric Supply - mobile version supplied with generator. Static option works on a single phase 16 Amp 230 Volt supply, fitted with a 3 pin Euro plug.

For more information contact:

+44 (0)1905 362 100

[www.wastespectrum.com](http://www.wastespectrum.com)

Follow us on:

