

# HURIKAN 1000



HURIKAN 1000 Mobile Incinerator

The Hurikan 1000 is a DEFRA 'Type Approved' extra-large top loading incinerator ideal for managing the disposal of animal carcasses and abattoir waste.

All models in the Hurikan Range are supplied with integral secondary chambers and fully conform to EU By-Products Regulation (ABPR) (EC) No 142/2011.

Designed, engineered and manufactured at our Worcester production facility in the UK the Hurikan 1000 is built using our market leading unique hearth bar technology.

With an impressively large main incineration chamber, the Hurikan 1000 has above and below hearth burners and can hold a significant amount of animal waste in one load.

The Hurikan 1000 has a proven capability of managing high capacity throughputs of a wide range of organic

waste material. The Hurikan 1000 mobile system is the best selling model in our Hurikan range and is used by governments worldwide.

The Hurikan 1000 is available as a static or mobile unit and with a burn rate of up to 1000kg\* (1 tonne) per hour, this model provides an excellent solution for on farm use where a rapid biosecure disposal solution is required.

\*Higher burn rate requirements may be achieved through our custom-built solution

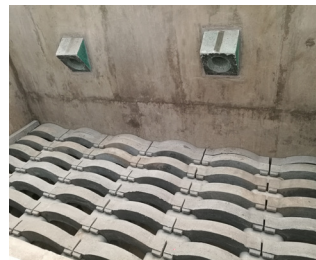
## Ideally Suited For:

- A wide range of animal carcasses
- Abattoir waste
- Emergency response
- High capacity

## Machine Construction

Integral to each model in the Hurikan range is the unique Waste Spectrum monolithic casting system:

- Ensures maximum strength in comparison to brick linings
- Materials expand and contract at the same rate as opposed to bricks and mortar
- Prevents animal fats penetrating the lining which prolongs life of the incinerator
- Insulating board is used to reduce heat loss
- Maintains an even temperature for the refractory
- Our stainless steel anchor system maintains the integrity of the lining



The unique hearth bar technology allows for efficient incineration from above and below.



Ash doors, as standard, allows fast and efficient ash removal whilst in operation.



A fully transportable mobile system ideal for remote locations with integral fuel tank, on board generator and, secure storage. The Hurikan 1000 is also fully skid mountable.

For more information contact:

+44 (0)1905 362 100

[www.wastespectrum.com](http://www.wastespectrum.com)

Follow us on:



## SPECIFICATIONS

<b>Burn rate</b>	UP TO 1000KG/hr*
<b>Front or top loading</b>	TOP
<b>Overall size (L x W x H)</b>	12.2 x 2.8 x 5.5
<b>Fuel consumption</b>	
<b>Diesel</b>	47 - 66 litres per hours
<b>LPG</b>	69 - 99 litres per hour
<b>Fire bars</b>	Yes
<b>External height (excluding standard stack)</b>	2774 mm
<b>External height (including standard stack)</b>	5475 mm
<b>Standard stack diameter (2D Size)</b>	526 mm
<b>Door opening (W x H)</b>	3905 x 1880 mm
<b>Load height</b>	1730 mm
<b>Chamber size (L x W x H)</b>	3.9 x 1.9 x (1.5 - 2.2) m
<b>Chamber volume</b>	10.92 m <sup>3</sup>
<b>Chamber load volume</b>	6.50 m <sup>3</sup>
<b>Chamber load capacity</b>	3580 m <sup>3</sup>
<b>Chamber capacity</b>	6010 m <sup>3</sup>
<b>Total weight</b>	21 Tonne
<b>Concrete pad size (L x W)</b>	14.5 x 6.0
<b>Electrical supply requirements</b>	Single phase 16A 230VAC 50/60Hz
<b>Burner output (KW)</b>	1106
<b>Electric consumption (KW/hr)</b>	2.25

\*Higher burn rate requirements may be achieved through our custom-built service.

## Features

- Easy operation, full training provided.
- Mechanical or manual loading possible.
- Fully automated and remote-controlled top-loading door: open/close/clamp operation.
- Market leading unique hearth bar technology allows fast and complete incineration.
- Pulse fired burners, above and below hearth maximises throughput. 5 burners in main chamber; 2 above & 3 below hearth.
- High Capacity up to 1000kg/hr\* burn rate enables fast disposal of waste.
- In the event of disease outbreak the incinerator can be operated and waste loaded within 2 hours of arrival on site providing swift containment.
- Ash doors, as standard, allows fast and efficient ash removal whilst in operation removing downtime.
- Temperature controlled pulse fired burners for optimal efficiency.
- Low thermal mass linings for minimal heat loss.
- Fully programmable touch HMI control panel with automatic burner shut off function and rapid ignition pulse fired burners for low running costs.
- Remote monitoring of the control system, enabling Waste Spectrum to support and monitor the incinerator during operation.
- Multiple channel thermocouple data logger built in to PLC.
- Can be loaded whilst in operation maximising the inherent thermal efficiency of our monolithic lining.
- A stainless steel, single skin exhaust stack is supplied as standard.
- Available as a static or mobile system.
- Mobile system is supplied with fuel tank, generator safety platform ladder, storage facility and ash rake.
- Electric Supply - mobile version supplied with generator. Static option works on a single phase 16 Amp 230 Volt supply, fitted with a 3 pin Euro plug.

For more information contact:

+44 (0)1905 362 100

[www.wastespectrum.com](http://www.wastespectrum.com)

Follow us on:

